

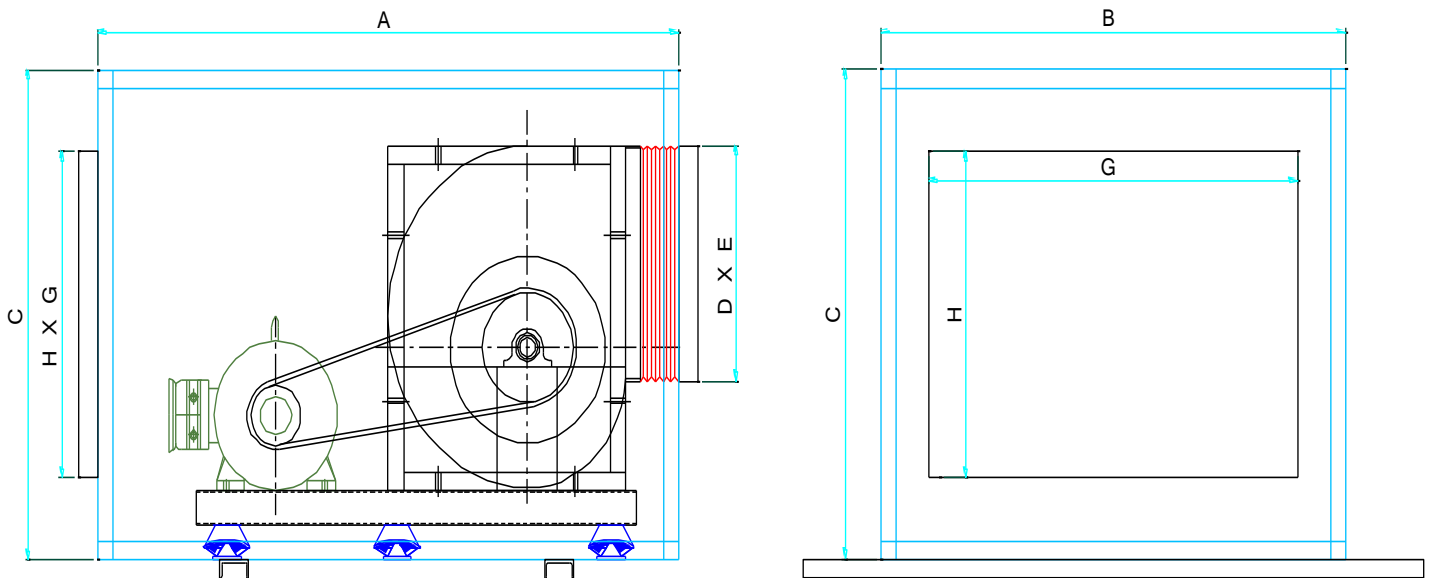


DFU Series CABINET FAN

SPECIFICATIONS

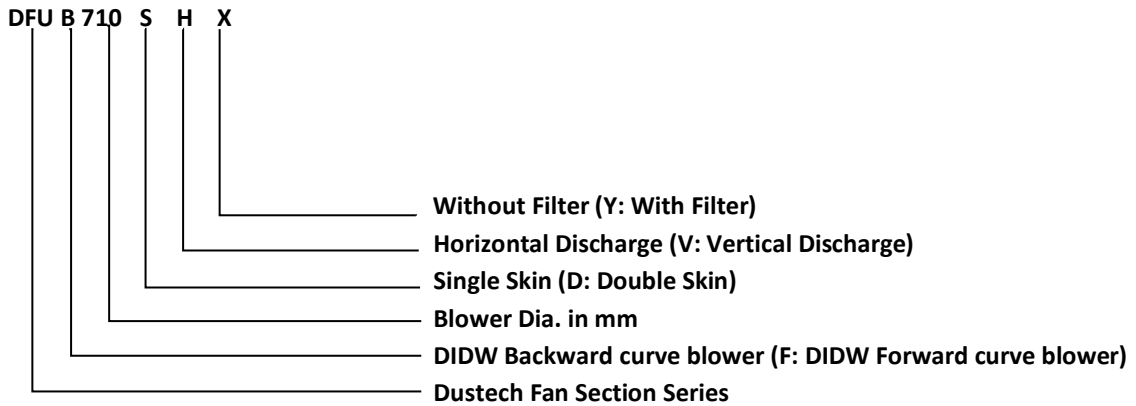
Cabinet Fan - DFU Series

- Cabinet is manufactured in galvanized sheet steel with a belt driven, high efficiency, DIDW forward curve, backward curve Centrifugal blower.
- Motor and drive assembly can be accessed through removal of two side panels for Maintenance purpose.
- Provided with Vibration Isolators/Pad to assure long and trouble free life.
- Provided with ABS plastic corner piece, aluminum column and galvanized sheet panel.
- Complete with inlet & outlet flange as standard.
- Acoustic lining is available upon request.
- Available in both Horizontal & vertical discharge orientation.
- Smoke Spill Cabinet Fan also available on Request.



DIMENSIONS

Model Description

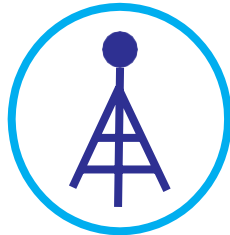


CABINET FAN SIZES

MODEL	Air Volume (CMH)	A	B	C	Outlet		Inlet		MAX MOTOR
					D	E	G	H	
DFU200	1400-2000	950	500	600	256	256	400	300	100L
DFU225	1800-2500	1050	700	700	288	288	400	400	112M
DFU250	2200-3200	1050	700	700	322	322	500	500	112M
DFU280	2800-4000	1050	750	750	359	359	500	500	132S
DFU315	3500-5000	1200	950	900	404	404	750	520	132M
DFU355	4300-6200	1250	1050	975	452	452	800	600	132M
DFU400	6000-8200	1500	1200	1050	506	506	950	700	160M
DFU450	8000-12000	1500	1300	1150	568	568	1100	750	160M
DFU500	10000-16000	1600	1600	1250	638	638	1200	750	160L
DFU560	15000-22000	1700	1700	1400	714	714	1300	900	160L
DFU630	21000-28000	2000	2000	1500	800	800	1500	1100	180M
DFU710	26000-36000	2000	2000	1650	898	898	1550	1350	180L
DFU800	34000-48000	2200	2100	1850	1008	1008	1800	1500	200L
DFU900	46000-60000	2500	2300	2050	1130	1130	2000	1800	225S
DFU1000	58000-72000	2600	2400	2200	1268	1268	2000	1800	225M



Five Stars



Stability



Safety



Easy Maintenance



Power Saving



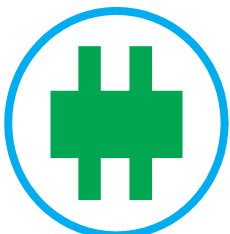
Cost Effective



Artistic



Convenience



Intelligence



Performance

OUR OTHER EQUIPMENTS:

- ‡Centrifugal Blower
- ‡Axial Flow Fan
- ‡Bag Filter
- ‡Cyclone

- ‡Wet Scrubber
- ‡Dry Scrubber
- ‡Spiral-Round Duct
- ‡Rectangular Ducting

- ‡Air Washer
- ‡ESP Fume Collection Unit
- ‡ESP Oil Collection Unit
- ‡Flat-Oval Ducting



DUSTECH  [®]

DUSTECH ENGINEERS PVT. LTD.

Plot No.- 7 B, 13/3 Mile Stone, Mathura Road, Faridabad - 121001 (HR.) INDIA

Ph. : +91 129 4158076 E-mail : dustech@rediffmail.com , sales@dustech.in

Web: dustech.in

